

# m/y destiny

an authentic italian refitting



[www.gruppopermare.it](http://www.gruppopermare.it)



destiny  
[www.gruppopermare.it](http://www.gruppopermare.it)



Camper & Nicholsons, Ltd.  
Southampton

**DESTINY**

N° 826/ Design by John Nicholson

1959

destiny  
[www.gruppopermare.it](http://www.gruppopermare.it)







N° 826

**"DESTINY"**

DESIGNED & BUILT BY

CAMPER & NICHOLSON

SOUTHAMPTON

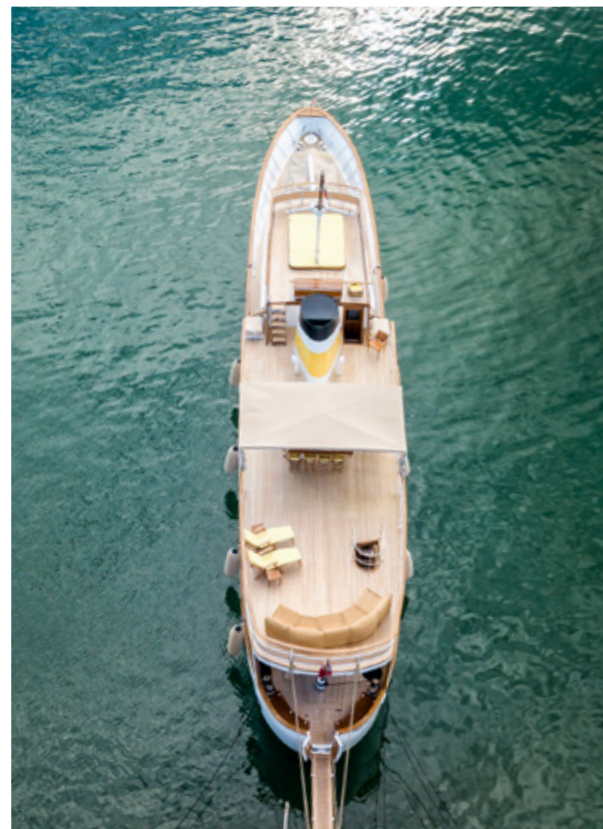
**1959**

ENGINES BY GARDNER





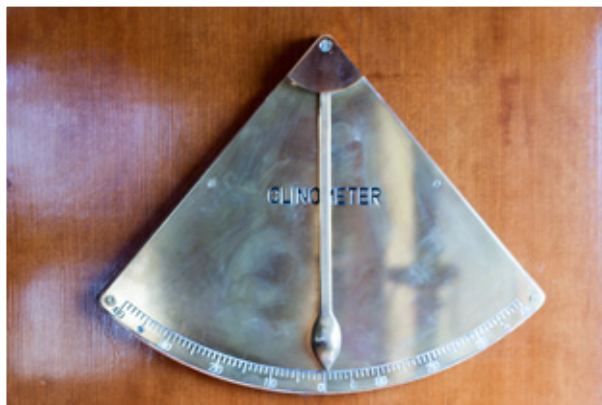
Camper & Nicholsons, Ltd.  
Southampton  
**DESTINY**  
N° 826/ Design by John Nicholson  
1959



destiny  
[www.gruppopermare.it](http://www.gruppopermare.it)





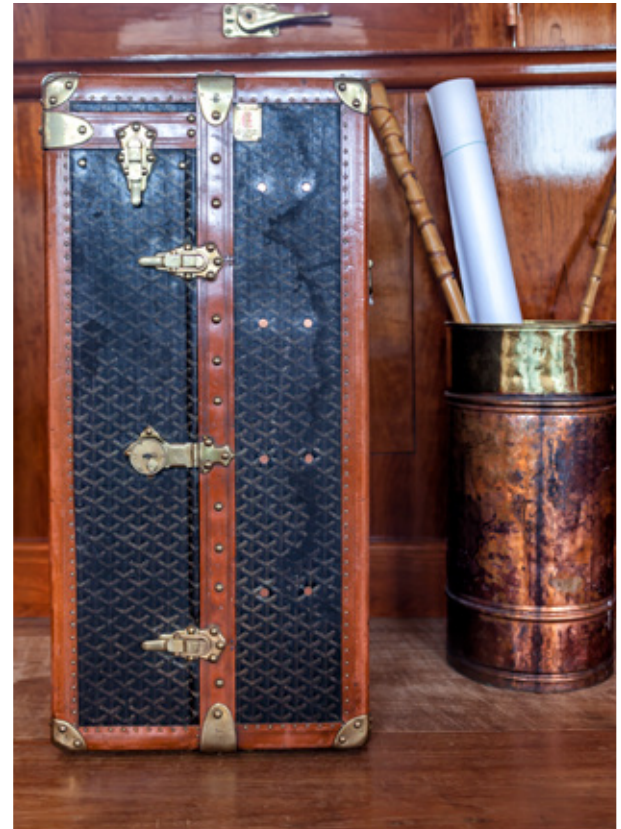


destiny  
www.gruppopermare.it





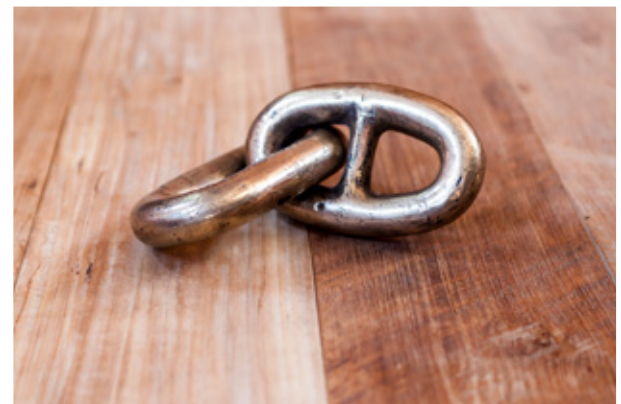
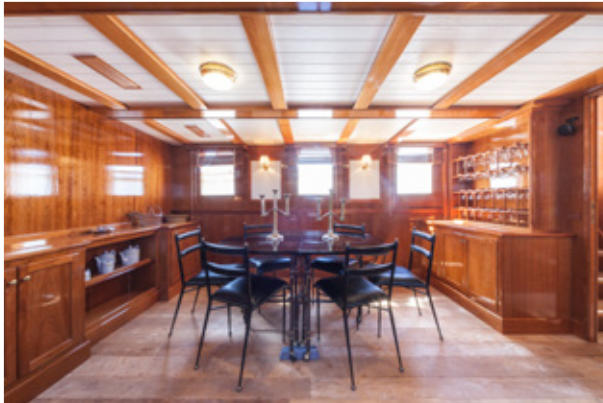




destiny  
[www.gruppopermare.it](http://www.gruppopermare.it)



destiny  
www.gruppopermare.it









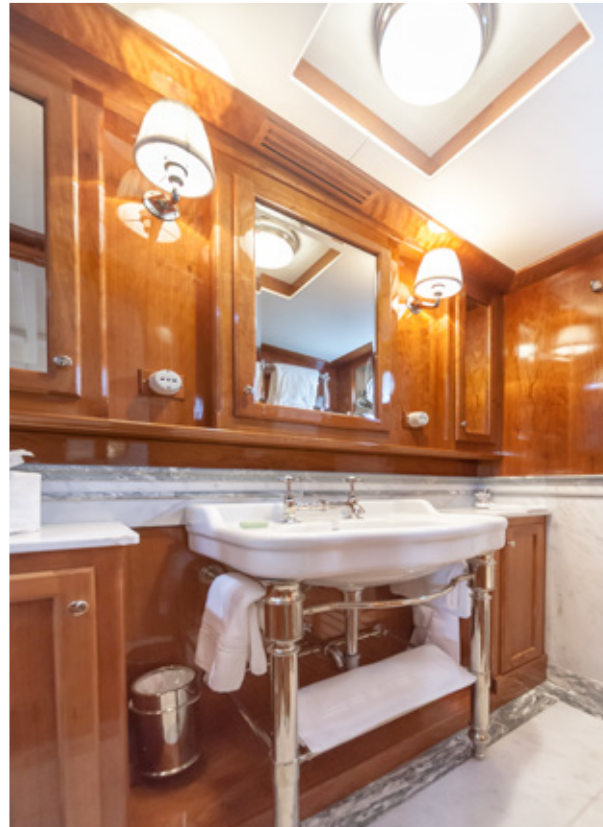
destiny  
www.gruppopermare.it





destiny  
www.gruppopermare.it







destiny  
[www.gruppopermare.it](http://www.gruppopermare.it)



destiny  
[www.gruppopermare.it](http://www.gruppopermare.it)

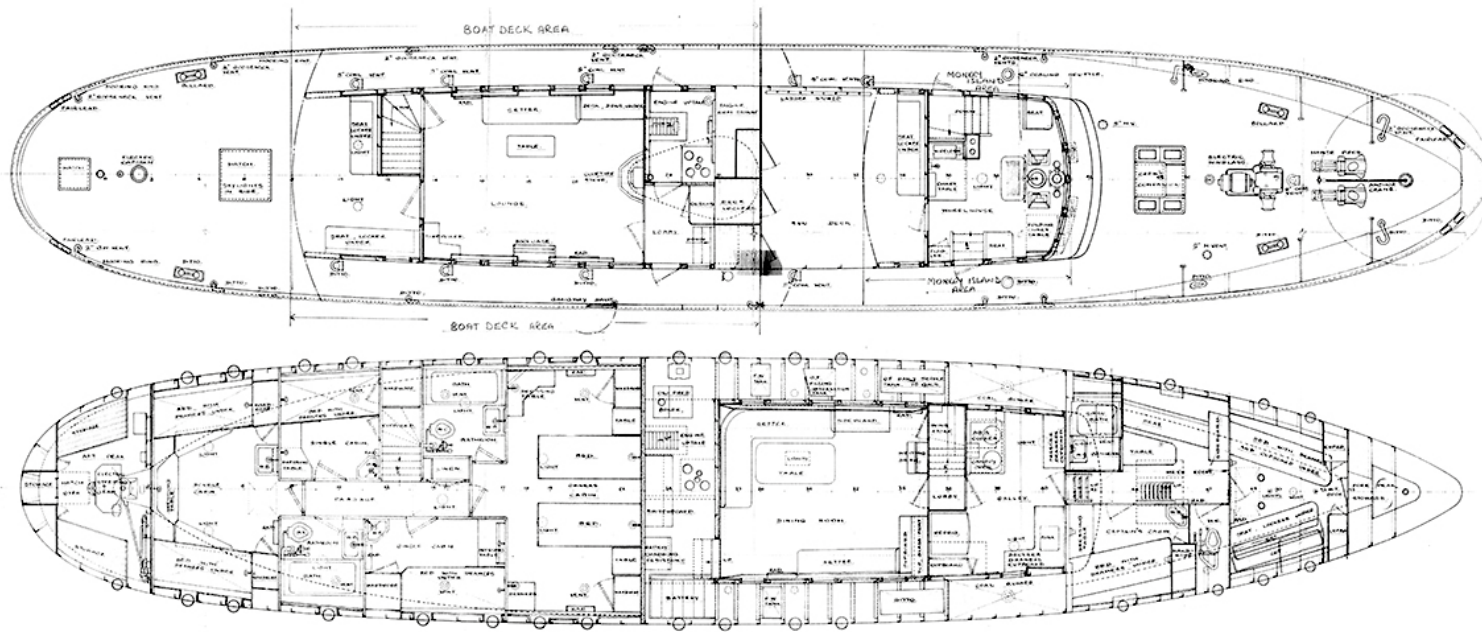




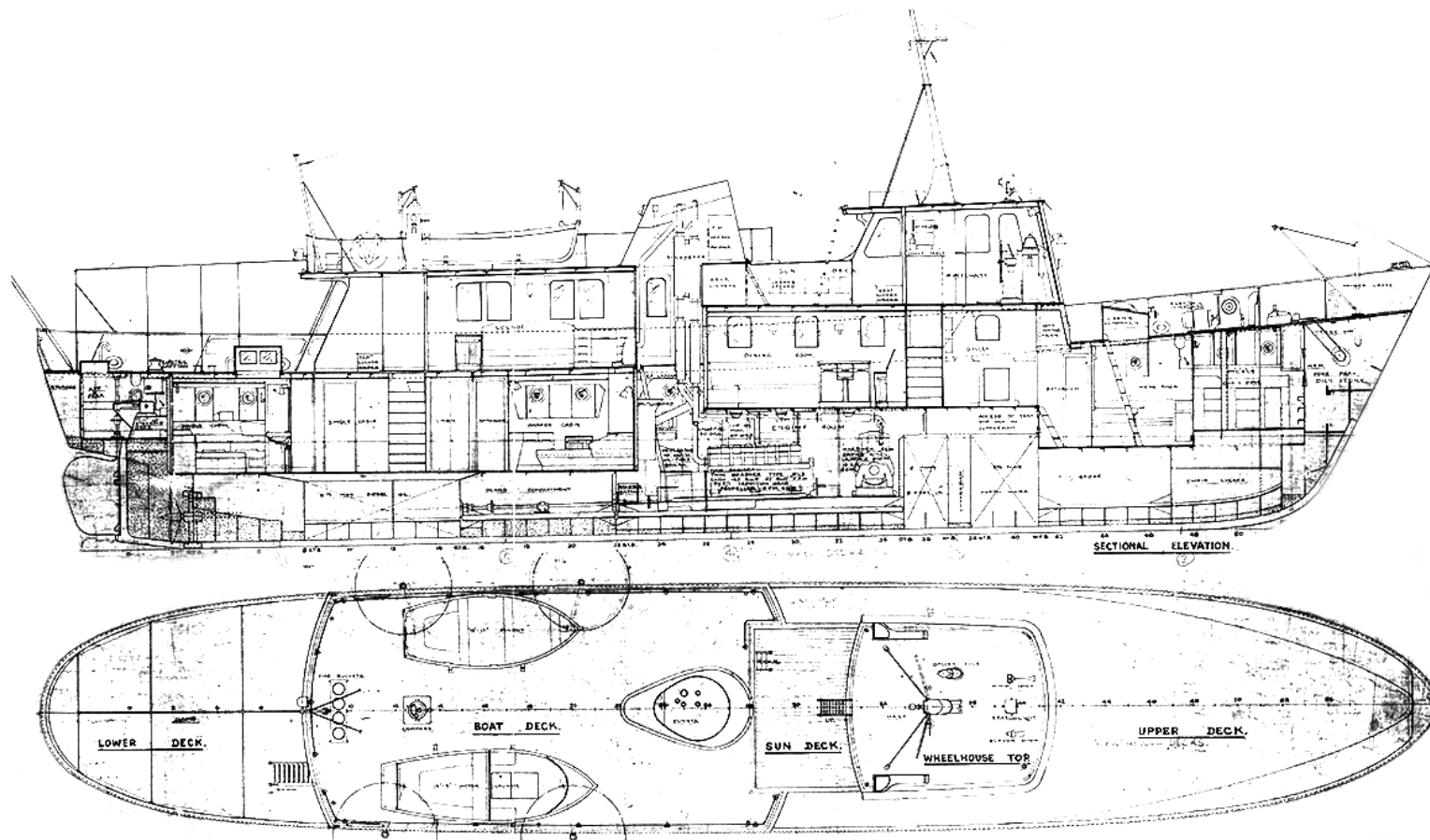
# destiny

1959 - 2017

an authentic italian refitting



Length: 27.12 metres  
Breadth: 5.18 metres  
Depth: 3.13 metres  
Registered tonnage: 66.06  
Gros Tonnage: 113.49



Original engines: GARDNER

Total engine power: 226.78 Kw

Material: iron - aluminium

Year of building: 1959

Name of builder: Camper & Nicholsons LTD - United Kingdom



destiny  
[www.gruppopermare.it](http://www.gruppopermare.it)